

OUR TOWN IS
NOW YOUR TOWN



WE WELCOME YOU

Table of Contents

Table of Contents.....	1	Committees.....	7
Welcome.....	2	Resources.....	8
History.....	3	Post Office.....	8
Village Hall.....	4	Driver's License Facility.....	8
Police Department.....	4	Newspaper.....	8
Public Works.....	5	Hospitals.....	8
Fire Department.....	5	Public Assistance.....	8
Senior Citizens Center.....	5	Utilities.....	9
Bethalto Museum.....	6	Bethalto Community Unit #8 Schools.....	9
Bethalto Library.....	6	State & Regional Education Services.....	9
Frequently Asked Questions.....	6	Colleges & Universities.....	9
Local Elected Officials.....	7	Bethalto Area Churches.....	10
Department Heads.....	7	Municipal & Civic Meetings.....	11
Appointments.....	7	Recycle Guide.....	12

The Village logo was designed to be representative of not only historical Bethalto, but also the newer and more progressive era.

The old Village Hall was built in 1874 and is now listed on the National Historical Register as the oldest, still standing, and functional municipal building in Madison County. The building was chosen to represent the historical roots of our community.



It originally housed the official offices and also served as the “jailhouse”. The upstairs meeting room was home to our public library for a considerable period of time. The building currently is the location of our historical museum.

The coal truck and train represent the rich coal mining industry that dominated the early days of the village. The coal was shipped out of town on the railroad, which bisected the village running east and west. Most people know the old train track area as Plegge Boulevard, now affectionately called the “Expressway”.

The arboretum was developed in 1966 (the land was part of the railroad right-of-way), and was one of few in the area. It represents the growth and

progressive nature of the community. A directory of the trees and bushes is available in the mayor’s and clerk’s offices. A beautiful place to stroll or power walk, its maturation only makes the experience more pleasant each time you visit.



The airport signifies growth and the ability of Bethalto to take flights and continue to soar to be the best community in which to live and work. Its small beginning, and continued steady growth, has developed it into one of the more highly recognized and economically important airports in the St. Louis metro area.

The center portion depicts the logo of our civic organization known as Bethalto Spirit. Spirit is a diverse group of citizens coming together to better the quality of life in our fine town. The trunk of the tree is a hand raised in volunteerism, the leaves represent the citizens of our village, and the jet is soaring into the sky to show progress.

Welcome...

Perched upon the edge of the rolling Illinois prairie is your new home – the Village of Bethalto. Low green hills and picturesque farms frame this attractive community of nearly 10,000 residents.

The peaceful setting and relaxed lifestyle make Bethalto an ideal place to raise a family. Yet, its close proximity to the rest of the St. Louis

metropolitan area means that your family will never exhaust the tremendous variety of cultural

opportunities and entertainment nearby.

Bethalto is home to the St. Louis Regional Airport, where an office and industrial park's expansion in the last few years has helped pour thousands of dollars into the tax base of the Village. The Village also boasts a

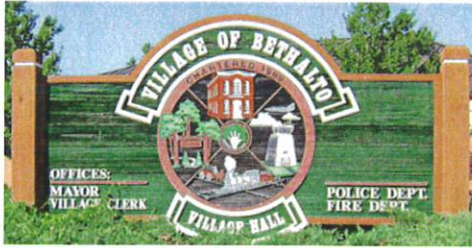


beautiful arboretum – home to trees and plants from around the world, a boon to the nature buff. The Village offers an extensive public library containing more than 30,000 volumes of

books, as well as videotapes, cassettes, magazines, and computers.

Through the week, it's common to find a variety of activities occurring at the community senior citizen's center. A van is available for transporting seniors to and from doctor's appointments, beauty shop appointments, grocery shopping, etc. Reservations can be made by calling 377-5263 a day in advance. Activities include pinochle, potlucks, dinner dances (requiring reservations at least a week in advance), and line dancing lessons offered twice a week.

Bethalto is home to several parks – the largest of which is located on Culp Lane. A three-quarter-mile walking path encircles a stocked fishing lake, children's playground and pavilion, with ample green space. Behind the Village Hall rests the Village Park where weddings take place at the gazebo, summer concerts are performed at the bandstand, the Jaycees play host to the annual Country Fair, the Rotary Club holds its annual Easter Egg Hunt, and the Homecoming Association holds its annual Labor Day Homecoming.



The Village also cares a great deal about its youth.

A new splash pad is now open, we have lighted tennis courts, soccer fields, a newly remodeled basketball court, pickleball courts and a number of ball diamonds. We have an active Boys & Girls Club, Rainbow Girls, 4-H clubs, and of course, Girl Scout and Boy Scout Troops.



Bethalto's Public Schools are second to none. From pre-school to a four-year comprehensive university, our region offers a multitude of educational opportunities.

The local school district offers an excellent high school, middle school, and neighborhood grade schools. In addition, there are two parochial schools located within the village limits– Roman Catholic and Lutheran.

Nearby is Lewis and Clark Community College, a two-year junior college, whose vocational graduates are employed throughout the area.



Southern Illinois University at Edwardsville, a four-year institution offering bachelor, master and doctorate degrees in many fields, is only minutes away. Within a 15-minute drive, you can learn dentistry, become a beautician, and learn to dance or take flying lessons. The spiritual needs of our community are served by churches of varying denominations. A listing is found in this publication.

Bethalto was founded in 1834, incorporated April 19, 1869 under a special charter and again in 1873 under the State of Illinois' general law. It is governed by a Village President and six (6) trustees elected at large.

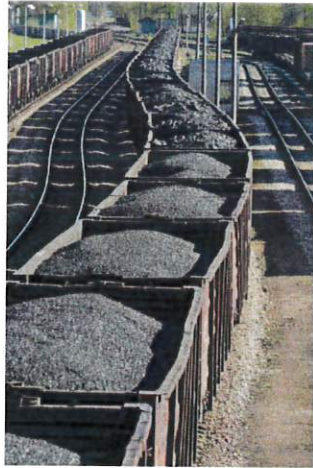
We are pleased that you have chosen to locate in Bethalto and we hope you and your family will be too. Contact information for your elected officials is listed in this publication. Don't hesitate to contact any of them if you have a problem.

HISTORY

Three words sum up the early history of Bethalto: grain, coal and trains. The first settlers in the area arrived in the early 19th century and found a land blessed with rich soil and various outcroppings of the coal.

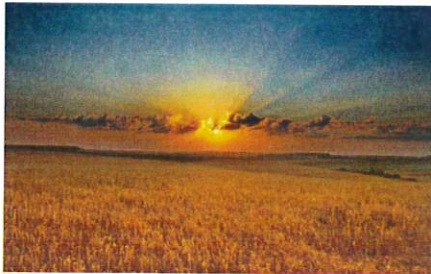
The construction of the Alton-Terre Haute Railroad in the mid-1850s ensured Bethalto's destiny as a farming and mining center.

It was around 1809 when large numbers of settlers arrived in this area – many of them Dutch and German settlers who came to farm. Indians were also found in the area, so numerous at one time along Indian Creek that there were Kickapoo villages, and that creek became named after the Indians. Many Indian relics have been found in that vicinity. Block houses were built in case protection might be needed, but there were few problems and only one recorded massacre in 1814.



Bethalto was favored in many ways to become an early settlement. It had good soil for growing grain and all needed food. There was a good vein of coal which had outcroppings that were discovered at an early date. There was a healthy growth of timber, especially on the west, north and south sides of the site which included oak, hickory, walnut and other trees suitable for making building materials.

The roads were also better than usual in a time when trails were



the roads and ferries were the bridges. Game was plentiful, with an abundance of squirrels, rabbits, turkey, prairie hens and other game.

About the time that the railroad was being constructed in the 1840s and 1850s, the population had grown to the point that it was necessary to plat further development. The first plat was laid out by Joe Starkey and was recorded on June 23, 1854. This is considered to be the humble beginning for Bethalto.

At one time, a railroad track was located where Erwin Plegge Expressway is today. The railroad, the second one built in Madison County, passed through the center of town and was responsible for the growth of Bethalto. The town consisted of four blocks facing the railroad – West Main and Sherman Streets on the south and Mill and Third (now Central) to Oak Street on the north.

The railroad, built between 1854 and 1856, was extended to St. Louis and was known as the St. Louis & Terre Haute. Later, it was taken over by the Big Four and then the New York Central. Railroads were the major transportation before the days of the car. Therefore, most towns were located near a railroad.

The railroad linked Bethalto to the Mississippi River so the people could market flour and coal. The



opening of the rail line through Bethalto enabled the coal milled here to be transported to a dock on the Mississippi River near what

is now the town of Hartford. From there, coal was carried by steamboat to towns throughout the Midwest. This encouraged the development of more mines. At one time, there were at least 30 mines in or near Bethalto.

Yankee Diggins, one of the largest coal mines in the state of Illinois, was located in Bethalto. During the Civil War in 1861-1865, mine production was down. Following the Civil War, coal production rose; but by 1900, almost all the mines were gone. One by one, they closed during the first decades and the market diminished. Today, there are no coal mines operating anywhere in Madison County.

Mills also formed a very important part of Bethalto's early history. Construction of the railroad through the Village proved to be as pivotal for the milling industry as it had been for coal mining. At one time, Bethalto was one of the most important flour milling towns in the nation and was home to the largest mill in Illinois.

As the 20th century progressed, Bethalto underwent a gentle transformation. Flour milling and coal mining gave way to corn and soybean farms and industry. Transportation remained a major factor in the Village's development, however, the methods changed.

Construction began in 1946 on what was then called Walston Aviation. Now known as St. Louis Regional Airport, subsequent expansion and addition of an office and industrial park are helping to propel Bethalto, into the future.



The railroad era ended for Bethalto in 1966. The right-of-way was offered to the Village by the New York Central Railroad Company, which last operated the line. The Village did not have the \$15,000 the rail company was asking for the 32 acres of land, so Bethalto National Bank stepped in and provided assistance for the purchase. This made possible the cross-town Expressway, a new home for the bank and a park and arboretum for the Village.

While Bethalto has moved forward, the Village has not forgotten its past. The old Village Hall, built in 1873 and enlarged in 1885, is a two-story brick Victorian/Italianate town hall. It is the oldest governmental building still in use in Madison County. Recognizing its historical significance, it was placed on the National Register of Historic Places in 1987 and serves as our Bethalto Museum. The city's tiny one-room jail can still be seen today. The Museum contains exhibits on Bethalto's past including the role of its citizens in World Wars I and II. Other exhibits include the founding of the town, the annual Homecoming Celebration, and a recreated classroom from the past.

In 1998, a fire at a local home revealed a perfectly protected log cabin within the structure. State historical preservationists estimate that the cabin was built in the mid-1800s. Bethalto's school children were asked by the Bethalto Rotary Club to help raise the funds needed to move and restore the cabin to its present site next to the museum. The "History Makes Cents" campaign collected more than one million pennies (\$10,000). The Bethalto Log Cabin stands as a symbol of the village's pioneer past as well as the resourcefulness of its present youth.



VILLAGE HALL

Mayor's Office **377-8051**

Clerk's Office **377-8051**

Village Hall **377-8051**

Zoning Administrator **377-7697**

Website: www.bethalto.com

The village offices are located at 213 North Prairie Street. There you will find the offices of the mayor and village clerk. The police, fire and civil defense departments are also located at this address. The mayor and clerk's offices are open Monday through Friday from 9am-12pm and 1pm-5pm. Services include:

- Voter registration
- Notary service
- Business licenses
- Burn and garage sale permits
- Reservations of the Senior Citizens Center
- Anything we can do to help serve the residents of Bethalto

POLICE DEPARTMENT

618-377-5266 or 911 Emergencies

Bethalto is proud to have a fine full-time police department serving the community. An officer also serves as the school resource officer at our local schools. The animal control officer is also based at the police station and may be reached by dialing **377-5266**. The department provides a multitude of services including: bicycle registration, checks of residences while owners are out of town, disposal of old ammunition and firearms, and assistance with installation of car seats for children.

PUBLIC WORKS

377-8013

The Public Works Department office at Village Hall houses both the water and street department plus our Zoning Administrator's office. Office hours are Monday through Friday from 9:00 AM to 4:30 PM. The office closes for lunch from 12pm-1pm daily.

WATER SERVICE: Water service may be obtained in your home or business by completing an application at the public works department. You will be billed monthly for water, sewer and refuse. An after-hours drop box at the rear of the building is available for payment of your bill. In case of an after-hours EMERGENCY (after 5pm or before 8am and the entire weekend) contact the emergency number at **618-792-6274**.

SPRING AND FALL CLEANUP: Each spring and fall, the village provides a major cleanup free to its residents. At that time, on your regular weekly trash pickup day, our trash hauler will provide curbside pickup of old furniture, etc. Watch for the notices on your water bills, on Village social media pages, on our website, and on the sign board in front of village hall.

BRUSH & LEAF PICKUP: Brush & leaf pickup is done through our waste hauler, Republic Services. They may be contacted directly at **618-656-6883**. The hauler requires that the leaves be bagged in biodegradable paper bags. No plastic bags will be accepted.

SNOW REMOVAL: When two inches or more of new snow has accumulated, plowing operations will begin. When snow removal begins, all parked cars must be removed from the streets marked "snow route" until the street surface has been completely plowed.

TRASH COLLECTION: The village has a contract with Republic Services to collect trash once weekly. There is also curbside recycling pickup, on the same day as your trash pickup, every other week. Billing for trash collection appears on your water bill.
618-656-6883

FIRE DEPARTMENT

377-6421

EMERGENCY DIAL 911

The Bethalto Volunteer Fire Department is located at 213 North Prairie Street. Each member of the fire department is trained in firefighting, emergency medical care/treatment, hazardous materials and technical rescue abilities.

Members of the department train weekly to keep their skills up to date and focus on training for new technologies, first responders. They also participate in regional trainings as available. Members of the department also play a part in the Madison County Hazardous Materials Response Team and serve on many regional task forces. Due to the dedication of the fire department, the Village's insurance rating (ISO) is a 5.

The Fire Department also participates in the community; playing an important role in the Bethalto Homecoming which is held every Labor Day weekend. Members of the fire department host various fire prevention activities during Fire Prevention Month in October. Members also conduct fire safety and school inspections.

If you are interested in joining the fire department, stop by on a Monday night during trainings at the fire station or call **377-6421**.

SENIOR CITIZEN'S CENTER

377-5263

Bethalto has one of the nicest senior citizen's centers in the area, and it is always in demand. It is located at 100 East Central and is available for use by our residents, and our close neighbors whose tax dollars help support the building.

Through Madison County, Fort Russell Township, Wood River Township, and the Village of Bethalto, the senior citizens have a handicapped-accessible van at their

SENIOR CITIZEN'S CENTER CONT.

disposal for doctor appointments, hair appointments, trips to the grocery store, etc. To make arrangements for the van to pick you up, call **377-5263** before noon, one day prior to your appointment. The van is for use by residents ages 55 and older.

The seniors are a lively group who have lots of fun, so don't hesitate to join their organization. The group holds monthly potluck meetings on the first Monday of each month.

The Village Clerk's office maintains the calendar for rental of the senior citizens building, as well as all other public buildings. Please call Village Hall at **377-8051**, if you wish to use any public facility.

BETHALTO MUSEUM

The Bethalto Museum located at 124 West Main Street, served as the village hall until a new village hall was built. In 1987, it was placed on the National Register of Historic Places. After several years of renovation, it became Bethalto's museum. It is open by appointment by calling Willard Wallace at **(618) 530-7955**.

BETHALTO LIBRARY

The Bethalto Public Library is its own library district which includes Cottage Hills, Meadowbrook, Moro, Midway and other surrounding towns. It is located at 321 South Prairie Street and is open daily. Library cards are issued free to all residents in the district. Over 30,000 volumes are available, as well as computers, an audio visual room, CD-ROM, a new popular materials section, a lower-level community room and varied children's programs throughout the year. A monthly newsletter is available by mail, by calling the library at **377-8141**. Income tax forms and use of typewriter/computer and a fax machine is also available. Visit the website at www.bethaltolibrary.org.



FREQUENTLY ASKED QUESTIONS

What are the regulations/requirements for pet owners? Is there a leash law in Bethalto?

Yes, the Village has a leash law. The owner or keeper of a dog or cat shall keep the animal under restraint or fenced at all times and shall not permit such animal to be at large. In residential zoning districts, a combination of not more than three dogs, cats, rabbits or other domestic animals may be kept as pets by the occupant(s) of a dwelling.

When do I need a building permit?

A building permit is required if you are building a new home, doing a room addition, finishing a basement, building a garage, adding a new deck or porch, adding a roof over an existing deck or patio, installing a swimming pool (in-ground or above ground) or doing an electrical upgrade. Permits are also needed for the replacement of shingles on an existing roof. Permits are not required for fences. Permits are available through our Building & Zoning Department by calling the Zoning Administrator at **377-7697**.

Do I need to acquire a permit for a yard/garage sale?

Yes. Garage and/or yard sales are permitted on single-family residential premises after receipt of a no cost permit from the Village Clerk. Such sales shall be limited to not more than twice per calendar year for a duration not exceeding two days for each occurrence. All signs displayed for such sales shall be removed within 12 hours of the close of the sale. Permits are available in the Clerk's office.

If you have any questions, please call the Clerk's office at **377-8051**. Office hours are Monday thru Friday, 9 AM to 5 PM.

When do I need an occupancy permit?

Every time a new occupant assumes residence in a property located in the Village, either through change of ownership or rental tenant, property owners are required to obtain an occupancy permit and an inspection of the property by village officials. Occupancy Permits are available at the Water office. If you have any questions, call the Zoning Administrator at **377-7697**.

Can I mix yard waste with my trash for weekly pick-up?

No. It is a violation of the Illinois Environmental Protection Act to mix yard waste and trash. Residents can contract with the Village’s trash removal contractor for yard waste pick-up by calling **618-656-6883**.

Mike DixonChief of Police
213 N. Prairie Street
Bethalto, IL 62010

Brian Buhs.....Fire Chief
213 N. Prairie Street
Bethalto, IL 62010

LOCAL ELECTED OFFICIALS

VILLAGE PRESIDENT/MAYOR

GARY BOST
213 N. Prairie Street
Bethalto, IL 62010
gbost@bethalto.com

VILLAGE CLERK

SUE LOWRANCE
213 N. Prairie Street
Bethalto, IL 62010
slowrance@bethalto.com

VILLAGE TRUSTEES

- BRADY DUGGER bdugger@bethalto.com
- TIM LOWRANCE tlowrance@bethalto.com
- MARIA PERKHISER mperkhiser@bethalto.com
- TIM TWEEDY ttweedy@bethalto.com
- TERRI KEISTER tkeister@bethalto.com
- JEFF MULL jmull@bethalto.com

DEPARTMENT HEADS

- Randy Reddick Building & Zoning
213 N. Prairie Street
Bethalto, IL 62010
- Rod Cheatham.....Public Works Director
213 N. Prairie Street
Bethalto, IL 62010

CURRENT APPOINTMENTS

1-Year Appointments

- Fire Chief.....Brian Buhs
- Emer. Services & Disaster Cord..... Brian Buhs
- Police Chief..... Mike Dixon
- Public Works Director.....Rod Cheatham
- Zoning & Code Enforcement.....Randy Reddick
- Building Inspector.....Aaron Snyder
- Electrical Inspector.....Tim Henson
- Plumbing Inspector.....Greg Fowler
- Fire Inspector..... Brian Buhs
- Village Attorney.....Kenneth Balsters
- Village Treasurer..... Gary Bost

COMMITTEES (*Chairman)

- Liquor Commission.....*Gary Bost
Brady Dugger
Terri Keister
- Finance, Revenue & Ordinances.....*Jeff Mull
Brady Dugger
Tim Lowrance
- Street, Alleys & Sidewalks.....*Maria Perkhiser
Brady Dugger
Tim Lowrance
- Employee Relations.....*Tim Tweedy
Maria Perkhiser
Jeff Mull
- Utilities, Water, Sewer, Refuse.....*Gary Bost
Tim Lowrance
Terri Keister
- Police, Fire, Public Safety.....*Tim Lowrance
Maria Perkhiser
Tim Tweedy

Recreation, Parks, Public Bldgs.....*Brady Dugger
 Tim Lowrance
 Terri Keister

Equipment Inspection, Acquisition.....*Maria Perkhiser
 Tim Tweedy
 Terri Keister

Residential/Commercial Bldg. Plans.....*Brady Dugger
 Jeff Mull
 Tim Tweedy

Grants & Planning*Terri Keister
 Maria Perkhiser
 Jeff Mull

**Mayor is Chairman of the Liquor and Utilities
 Committees, and is Ex-Officio Member of all Committees

RESOURCES

Village Board of Trustees' meetings are open to the public and held at 7:00 PM on the 2nd Monday of each month in the Council Room at the Village Hall. If the meeting date falls on a legal holiday, the meeting is held the next day, Tuesday.

Bethalto Townships include Wood River and Fort Russell. Prairie Street is the dividing line and residents living on the west side of Prairie Street are a part of Wood River Township; those living on the east side of Prairie Street are a part of Fort Russell Township.

Fort Russell Township Supervisor.....Stacy McRae
 377-5660

Fort Russell Township Assessor.....Sandra Strohmeier
 377-8260

Wood River Township Supervisor.....Mike Babcock
 259-2366

Wood River Township Assessor.....Sandy Shaw
 259-1532

POST OFFICE

Bethalto Post Office
 115 W. Central Street – 377-8714
 Hours – Monday – Friday – 8:30 AM to 5 PM
 Saturday – 9 AM to 12 PM
 Lobby Box open 24 hours

DRIVER'S LICENSE FACILITY

The Illinois Secretary of State's office provides driver's license examinations, vehicle titles and registrations, and license sticker renewals. You may also sign up as an organ donor. The driver's license facility is located at St. Louis Regional Airport, 20 Terminal Drive, East Alton. The telephone number is 258-0600.

NEWSPAPERS

The Telegraph.....Alton, IL 62002
 618-463-2500

St. Louis Post Dispatch.....900 N. Tucker Blvd.
 St. Louis, MO 63101
 800-365-0820

The Advantage.....Alton, IL 62002
 618-468-1026

HOSPITALS

Alton Memorial Hospital.....1 Memorial Drive
 Alton, IL 62002
 618-463-7311

OSF St. Anthony's Hospital.....St. Anthony Way
 Alton, IL 62002
 618-465-2571

OSF St. Clare's.....915 East Fifth Street
 Alton, IL 62002
 618-463-5151

Anderson Hospital Express Care.....159 E. MacArthur Dr.
 Bethalto, Il. 62010
 618-258-7504
610 Texas Blvd
 Bethalto, IL 62010

Alton Memorial Convenient Care 163 E. Bethalto Dr.
 618-433-6645

PUBLIC ASSISTANCE

Ill. Dept. of Public Aid.....608 W. St. Louis Ave.
 East Alton, IL 62024
 618-258-1600

Ft. Russell Township.....113 Cross Creek Drive
 Bethalto, IL 62010
 618-377-5660

Wood River Township.....49 South Ninth Street
 East Alton, IL 62024
 618-259-2366

UTILITIES

- Gas & Electric.....AmerenIP
800-755-5000
- Electric.....Southwestern Electric Cooperative
Small portion of southeastern Bethalto
800-637-8667
- Telephone Service.....AT&T
800-244-4444
- Cable Television.....Charter Communications
317 Homer Adams Pkwy
Alton, IL 62002
888-438-2427
- Springfield Office.....607 E. Adams Street, Suite 1520
Springfield, IL 62701
312-886-3506
217-492-5089
FAX: 217-492-5099

BETHALTO COMMUNITY UNIT #8 SCHOOLS

BOARD OF EDUCATION

A seven-member Board of Education elected by the voters in the District meets on the fourth Monday of each month at 6:30 PM at the Dr. Sandra J. Wilson Administrative Services Center. Regular meetings are open to the public. The Board welcomes citizen attendance at these meetings and time is set aside on the agenda for citizen participation.

PUBLIC SCHOOLS

DISTRICT ADMINISTRATION

Dr. Jill Griffin, Superintendent
 Dr. Barrett Deist, Business Manager (CSBO)
 101 School St. Bethalto, IL 62010
 (618) 377-7200
 Website: www.bethalto.org
 Facebook:
<https://www.facebook.com/BethaltoSchools>

School Information

- Civic Memorial High School (Grades 9-12)**
200 School Street, Bethalto IL 62010
(618) 377-7230
Website: <http://civicmemorial.bethalto.org/>
- Wilbur Trimpe Middle School (Grades 6-8)**
910 Second Street, Bethalto, IL 62010
377-7240
Website: <http://trimpe.bethalto.org>
- Meadowbrook Intermediate (Grades 4-5)**
111 West Roosevelt Street, Moro, IL 62067
(618) 377-7270
Website: <http://meadowbrook.bethalto.org>
- Parkside Primary (Grades 2-3)**
600 East Central, Bethalto, IL 62010
(618) 377-4100
Website: <http://parkside.bethalto.org>
- Bethalto East Primary (Grades Pre-K-1)**
309 Albers Place, Bethalto, IL 62010
(618) 377-7250
Website: <http://bethaltoeast.bethalto.org>

STATE & REGIONAL EDUCATION SERVICES

- Illinois State Board of Education.....217-782-2221
Springfield, IL
- Madison County Education Service Region.....
618-692-6200
Ext. 4530
Edwardsville, IL
- Regional Superintendent of Schools.....618-692-6200
- Regional III Special Education Cooperative.....
618-462-1031

COLLEGES & UNIVERSITIES

- Lewis and Clark Community College.....618-466-3411
- Southern Illinois University at Edw.....618-692-2000

BETHALTO AREA CHURCHES

Assembly of God

Cornerstone Church.....196 S. Moreland Road
Bethalto
377-7625
Fax: 377-8973

Meadowbrook Assembly of God....101 Neunaber Dr
Meadowbrook
377-8733

Baptist

Bethalto General Baptist.....820 S. Prairie
Bethalto
377-5751
Fax: 377-5832

First Southern Baptist Church.....105 Fairway
Meadowbrook
377-9831

Bible Baptist Church.....11 W. McArthur Drive
Cottage Hills
618-259-2400
Fax: 618-259-2425

Cottage Hills Baptist Church.....43 Neunaber Street
Cottage Hills
618-259-6512

First Southern Baptist Church.....1434 Fourth Street
Cottage Hills
618-259-2388
Fax: 618-259-2390

Cottage Hills Baptist Church.....43 Neunaber Street
Cottage Hills
618-259-6512

First Southern Baptist Church.....1434 Fourth Street
Cottage Hills
618-259-2388
Fax: 618-259-2390

First General Baptist.....166 East Airline Drive

East Alton

618-259-6499

Holiday Shores Baptist Church.....6251 Moro Road
Holiday Shores
377-7729

Catholic

Our Lady Queen of Peace.....132 Butcher
Bethalto
377-6519
Fax: 377-9550

Christian

First Christian Church.....724 Bethalto Boulevard
Bethalto
377-9259
Fax: 377-9350

Church of God

Church of God.....800 E. Bethalto Drive
Bethalto
377-3070
Fax: 377-3072

Lifebrook Church.....400 N. Beau Chateau
Bethalto
377-8804

Lutheran

Zion Lutheran.....625 Church Drive
Bethalto
377-8314
Fax: 377-8740

Concordia Lutheran.....21 Circle Drive
Cottage Hills
259-2911

Pentecostal

Landmark Worship Center.....123 West Sherman
Bethalto
377-2300

Presbyterian

Bethalto United Presbyterian.....15 Nelson Drive
Bethalto
377-5317

Moro Presbyterian Church.....402 West Moro Drive
Moro
377-6395

United Methodist

Bethalto United Methodist.....240 East Sherman
Bethalto
377-8413
Fax: 377-9414

St. Paul's United Methodist.....10 N. Center Street
Rosewood Heights
259-5210

United Church of Christ
St. John's United Church of Christ.....7456 Lake
Midway
377-9288
Fax: 377-8963

Non-Denominational
Grace Community Church.....20 Harvel Court
Cottage Hills
258-8633

Riverbend Calvary Chapel.....400 N. Center
Rosewood Heights
258-7211

Heart's Harvest.....111 Sheridan Street
Bethalto
377-8277

MUNICIPAL & CIVIC MEETINGS

Municipal Government Meetings

Village Board.....Second Monday, 7:00 PM
Plan Commission.....Fourth Thursday, 6:00 PM
Zoning Board.....Fourth Thursday, 6 PM
Committees.....Fourth Monday as needed

Club & Civic Organizations

American Legion Post 214.....109 S. Prairie
377-3089
Fourth Tuesday, 7:30 PM
American Legion Auxiliary.....109 S. Prairie
377-3089
Fourth Monday, 7:30 PM
Boys 4-H.....Senior Citizen's Center, 100 E. Central
377-8197
Fourth Monday, 7:30 PM

Girls 4-H.....Senior Citizen's Center, 100 E. Central
377-8588
First Monday, 6:30 PM
Boy Scouts.....377-6011
Girl Scouts.....Neighborhood Bluffs, Dist. 6
377-6963
Demolay.....Masonic Temple, 455 S. Prairie St.
First & Third Monday, 7 PM
Eastern Star.....Masonic Temple, 455 S. Prairie St.
Second Monday, 7:30 PM
Masons.....Masonic Temple, 455 S. Prairie St.
First & Third Thursday, 7 PM
Rainbow Girls...Masonic Temple, 455 S. Prairie St.
Second & Fourth Wednesday, 7 PM
Jaycees.....377-9226
Kiwanis.....377-0767
First & Third Tuesdays, 12 PM
Knights of Columbus.....Our Lady Queen of Peace
377-3034
Two Mondays a month
Rotary.....Village Hall
Tuesdays, 6 PM
Senior Citizens.....Senior Center, 100 E. Central
377-5263
First Tuesday, 11 AM
Bethalto Spirit.....Historical Museum, 124 W. Main
Second Tuesday, 7 PM
T.O.P.S.....Community Room, Village Hall
377-8584
Mondays, 5:30 PM
T.O.P.S.....Bethalto United Methodist Church
240 E. Sherman
Thursdays, 5:30 PM
Weight Watchers.....
First Christian Church, 724 Bethalto Blvd.
377-9259
Tuesdays, 10 AM & 6:30 PM
Women's Club.....Senior Center, 100 E. Central
Second Tuesday, 7:30 PM



All-in-One Recycling™

We'll handle it from here.™

Plastics

- #1, #2, #3, #4, #5, #7 plastic containers
- Includes bottles, jars, jugs and other rigid plastics
- Food and beverage cartons



Paper

- Newspaper, magazines, brochures
- Cardboard
- Paper towel rolls
- Mail and phone books



Cans

- Aluminum & Metal Cans
- Loose jar lids
- Metal bottle caps
- Aluminum Foil



Glass

- Glass bottles and jars
- Glass food containers
- Glass beverage containers

Non-Recyclable

- **Polystyrene #6**
- **Plastic Utensils**
- **Plastic Bags**
- **Food Products**
- **Tyvek™ Envelopes**
- **Chip Bags**
- **Candy Bar Wrappers**
- **3-Ring Binders**